



# Thinvent Industrial PC IPC3

## Intel Core i3-1215U processor

6 core, up to 4.4 GHz, 10 MB cache

32GB DDR4 RAM

1TB SSD

No WiFi

Windows 11 Pro

SKU: IPC3-I3\_12-32-M1024-12\_5-X-11P-0



Thinvent® IPC3: Relentless Performance, Unbreakable Reliability.

Experience the pinnacle of industrial computing with the Thinvent® Industrial PC IPC3. Engineered for the most demanding environments, this rugged, fanless powerhouse ensures 24x7 operation, delivering unwavering performance where it matters most. Proudly 100% designed in India, the IPC3 is your trusted partner for critical industrial and IoT applications.

### Unleash Performance

- Driven by an Intel® Core™ i3-1215U processor with 6 cores and a blistering 4.4 GHz max frequency, backed by 10 MB cache.
- Multitask effortlessly with 16GB DDR4 RAM.
- Store vital data and boot applications instantly on the lightning-fast 256GB SSD.

### Built for the Edge

- Its fanless design, housed in a durable, anodised silver aluminium casing, operates flawlessly from 0°C to 50°C and 20% ~ 80% non-condensing humidity.
- RoHS and ISO certifications underscore its commitment to quality and environmental standards.

- Compact dimensions of 200mm × 184mm × 52mm allow for flexible deployment.

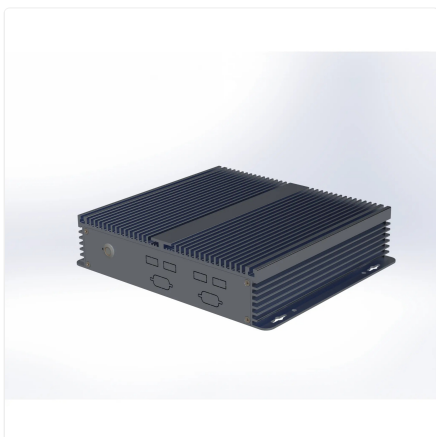
### Robust Connectivity

- Essential display outputs include 1 HDMI and 1 VGA port.
- Connect peripherals with 2 USB 3.2, 2 USB 2.0, and 4 front USB 2.0 ports.
- A dedicated 1000 Mbps Ethernet port guarantees secure, high-speed wired network connectivity, ensuring stability in mission-critical operations without WiFi interruptions.
- Features separate Speaker Out and Mic In ports for audio needs.

### Reliable Power and OS

- Wide-ranging power input (100~275 Volts AC, 50~60 Hz, 1.5 Amps maximum) via a 12V 7A adapter with a 2 Metre cable for global adaptability.
- Pre-installed with Microsoft Windows 11 Pro, ready for your professional applications.

Elevate your operational efficiency with a PC built to withstand, perform, and endure.



## Specifications

### PROCESSING

---

|                 |         |
|-----------------|---------|
| Generation      | 12th    |
| Series          | i3      |
| Processor Brand | Intel   |
| Processor Model | 1215U   |
| Cores           | 6       |
| Max Frequency   | 4.4 GHz |
| Cache           | 10 MB   |
| Main Memory     | 32 GB   |
| SSD Storage     | 1024 GB |

### DISPLAY

---

|      |   |
|------|---|
| HDMI | 1 |
| VGA  | 1 |

### AUDIO

---

|             |   |
|-------------|---|
| Speaker Out | 1 |
| Mic In      | 1 |

### CONNECTIVITY

---

|                   |                  |
|-------------------|------------------|
| USB 3.2           | 2                |
| USB 2.0           | 2                |
| Front USB 2.0     | 4                |
| Front Serial Port | 2 DB9 male RS232 |
| RS485 Option      | 1                |

### NETWORKING

---

|          |           |
|----------|-----------|
| Ethernet | 1000 Mbps |
|----------|-----------|

### POWER

---

|              |  |
|--------------|--|
| DC Voltage   | 12 Volts                                     |
| DC Current   | 5 Amps                                       |
| Power Input  | 100~240 Volts AC, 50~60 Hz, 1.5 Amps maximum |
| Cable Length | 2 Metre                                      |

### ENVIRONMENTAL

---

|                       |                              |
|-----------------------|------------------------------|
| Operating Temperature | 0°C ~ 50°C                   |
| Operating Humidity    | 20% ~ 80% RH, non condensing |
| Certifications        | RoHS, ISO                    |

### PHYSICAL

---

|                      |                         |
|----------------------|-------------------------|
| Form Factor          | Industrial PC           |
| Thermal Design       | Fanless Passive Cooling |
| Dimensions           | 200mm × 184mm × 52mm    |
| Packing Dimensions   | 340mm × 235mm × 105mm   |
| Housing Material     | Aluminium               |
| Housing Finish       | Anodised                |
| Housing Colour       | Silver                  |
| Net and Gross Weight | 2.45kg, 2.87kg          |

### OPERATING SYSTEM

---

|                  |                          |
|------------------|--------------------------|
| Operating System | Microsoft Windows 11 Pro |
|------------------|--------------------------|

## Ordering Information

| PRODUCT CODE   |  |
|--|--|
| <b>IPC3-i3_12-[RAM]-[SSD]-12_7-[Wireless]-[OS]-[Accessories]</b> |  |
| RAM  | <b>4</b> = 4GB DDR4 <b>8</b> = 8GB DDR4 <b>16</b> = 16GB DDR4 <b>32</b> = 32GB DDR4<br><b>64</b> = 64GB DDR4   |
| SSD  | <b>m128</b> = 128GB <b>m256</b> = 256GB<br><b>m32</b> = 32GB <b>m512</b> = 512GB<br><b>m1024</b> = 1TB   |
| Wireless   | <b>m</b> = Dual Band WiFi <b>X</b> = No WiFi   |
| OS   | <b>DOS</b> = DOS <b>W_OS</b> = Without OS<br><b>11V</b> = Windows 11 IoT Value <b>11P</b> = Windows 11 Pro<br><b>Thinux</b> = Thinux™ Embedded Linux <b>U</b> = Ubuntu Linux |
| Accessories  | <b>0</b> = None <b>4S</b> = Quad DB9 Serial  |

[www.thinvent.in](http://www.thinvent.in)

[sales@thinvent.in](mailto:sales@thinvent.in)

+91-11-430-77467

 +91-99903-44251

### R&D and Manufacturing

#11 Sports Complex

Salvador Do Mundo

North Goa - 403101, India

### Sales

UGF-10-A Omaxe Gurgaon Mall

Sector 49, Sohna Road

Gurgaon - 122018, India

