



# Thinvent Industrial PC IPC3

## Intel Core i3-1215U processor

6 core, up to 4.4 GHz, 10 MB cache

32GB DDR4 RAM

512GB SSD

No WiFi

Windows 11 Pro

SKU: IPC3-I3\_12-32-M512-12\_5-X-11P-0



Thinvent® IPC3: Relentless Performance, Unbreakable Reliability.

Experience the pinnacle of industrial computing with the Thinvent® Industrial PC IPC3. Engineered for the most demanding environments, this rugged, fanless powerhouse ensures 24x7 operation, delivering unwavering performance where it matters most. Proudly 100% designed in India, the IPC3 is your trusted partner for critical industrial and IoT applications.

### Unleash Performance

- Driven by an Intel® Core™ i3-1215U processor with 6 cores and a blistering 4.4 GHz max frequency, backed by 10 MB cache.
- Multitask effortlessly with 16GB DDR4 RAM.
- Store vital data and boot applications instantly on the lightning-fast 256GB SSD.

### Built for the Edge

- Its fanless design, housed in a durable, anodised silver aluminium casing, operates flawlessly from 0°C to 50°C and 20% ~ 80% non-condensing humidity.
- RoHS and ISO certifications underscore its commitment to quality and environmental standards.

- Compact dimensions of 200mm × 184mm × 52mm allow for flexible deployment.

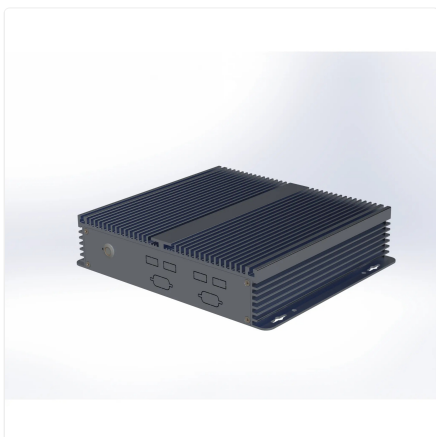
### Robust Connectivity

- Essential display outputs include 1 HDMI and 1 VGA port.
- Connect peripherals with 2 USB 3.2, 2 USB 2.0, and 4 front USB 2.0 ports.
- A dedicated 1000 Mbps Ethernet port guarantees secure, high-speed wired network connectivity, ensuring stability in mission-critical operations without WiFi interruptions.
- Features separate Speaker Out and Mic In ports for audio needs.

### Reliable Power and OS

- Wide-ranging power input (100~275 Volts AC, 50~60 Hz, 1.5 Amps maximum) via a 12V 7A adapter with a 2 Metre cable for global adaptability.
- Pre-installed with Microsoft Windows 11 Pro, ready for your professional applications.

Elevate your operational efficiency with a PC built to withstand, perform, and endure.



## Specifications

### PROCESSING

---

Generation	12th
Series	i3
Processor Brand	Intel
Processor Model	1215U
Cores	6
Max Frequency	4.4 GHz
Cache	10 MB
Main Memory	32 GB
SSD Storage	512 GB

### DISPLAY

---

HDMI	1
VGA	1

### AUDIO

---

Speaker Out	1
Mic In	1

### CONNECTIVITY

---

USB 3.2	2
USB 2.0	2
Front USB 2.0	4
Front Serial Port	2 DB9 male RS232
RS485 Option	1

### NETWORKING

---

Ethernet	1000 Mbps
----------	-----------

### POWER

---

DC Voltage	12 Volts
DC Current	5 Amps
Power Input	100~240 Volts AC, 50~60 Hz, 1.5 Amps maximum
Cable Length	2 Metre

### ENVIRONMENTAL

---

Operating Temperature	0°C ~ 50°C
Operating Humidity	20% ~ 80% RH, non condensing
Certifications	RoHS, ISO

### PHYSICAL

---

Form Factor	Industrial PC
Thermal Design	Fanless Passive Cooling
Dimensions	200mm × 184mm × 52mm
Packing Dimensions	340mm × 235mm × 105mm
Housing Material	Aluminium
Housing Finish	Anodised
Housing Colour	Silver
Net and Gross Weight	2.45kg, 2.87kg

### OPERATING SYSTEM

---

Operating System	Microsoft Windows 11 Pro
------------------	--------------------------

## Ordering Information

PRODUCT CODE	
<b>IPC3-i3_12-[RAM]-[SSD]-12_7-[Wireless]-[OS]-[Accessories]</b>	
RAM	<b>4</b> = 4GB DDR4 <b>8</b> = 8GB DDR4 <b>16</b> = 16GB DDR4 <b>32</b> = 32GB DDR4 <b>64</b> = 64GB DDR4
SSD	<b>m128</b> = 128GB <b>m256</b> = 256GB <b>m32</b> = 32GB <b>m512</b> = 512GB <b>m1024</b> = 1TB
Wireless	<b>m</b> = Dual Band WiFi <b>X</b> = No WiFi
OS	<b>DOS</b> = DOS <b>W_OS</b> = Without OS <b>11V</b> = Windows 11 IoT Value <b>11P</b> = Windows 11 Pro <b>Thinux</b> = Thinux™ Embedded Linux <b>U</b> = Ubuntu Linux
Accessories	<b>0</b> = None <b>4S</b> = Quad DB9 Serial

[www.thinvent.in](http://www.thinvent.in)

[sales@thinvent.in](mailto:sales@thinvent.in)

+91-11-430-77467

+91-99903-44251

**R&D and Manufacturing**  
 #11 Sports Complex  
 Salvador Do Mundo  
 North Goa - 403101, India

**Sales**  
 UGF-10-A Omaxe Gurgaon Mall  
 Sector 49, Sohna Road  
 Gurgaon - 122018, India

