

Intel Core i3-1215U processor

6 core, up to 4.4 GHz, 10 MB cache

Dual LAN

32GB DDR4 RAM

256GB SSD

No WiFi

Thinux Embedded Linux

SKU: IPC3-I3_12L-32-M256-12_7-X-THINUX-0



Engineered for the edge, built for endurance: the Thinvent IPC3.

Unwavering reliability where it matters most

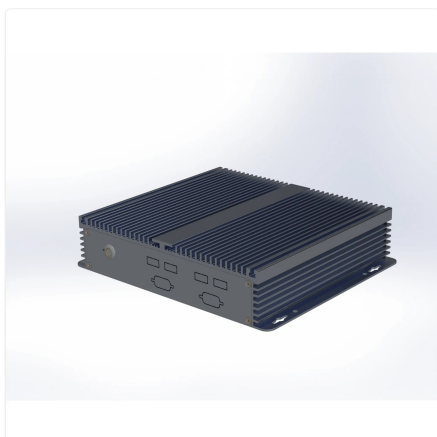
Forged for the toughest industrial and IoT applications, this rugged PC thrives where others fail. Its fanless, solid-state design eliminates moving parts, ensuring silent, maintenance-free 24/7 operation in demanding environments from factory floors to remote outdoor installations. The robust aluminium chassis with an anodised finish shrugs off dust, vibration, and temperature extremes.

Simplify complex operations with intelligent connectivity

- Seamlessly integrate with a vast array of legacy and modern industrial equipment using versatile serial and dual Ethernet ports.

- Deploy and manage your systems effortlessly with the integrated Thinux™ platform, featuring powerful remote management and display tools.
- Run essential productivity and location-based applications directly on the device for a streamlined, self-contained solution.

Proudly conceived and designed in India, the IPC3 delivers robust, dependable computing power to drive your core operations without compromise. It's the steadfast digital heart for your most critical projects.



Specifications

PROCESSING

Generation	12th
Series	i3
Processor Brand	Intel
Processor Model	1215U
Cores	6
Max Frequency	4.4 GHz
Cache	10 MB
Main Memory	32 GB
SSD Storage	256 GB

DISPLAY

HDMI	1
VGA	1

AUDIO

Speaker Out	1
Mic In	1

CONNECTIVITY

USB 3.2	2
Front USB 2.0	4
Front Serial Port	2 DB9 male RS232
RS485 Option	1

NETWORKING

Ethernet	1000 Mbps
Ethernet Ports	2

POWER

DC Voltage	12 Volts
DC Current	7 Amps
Power Input	100~275 Volts AC, 50~60 Hz, 1.5 Amps maximum
Cable Length	2 Metre

ENVIRONMENTAL

Operating Temperature	0°C ~ 50°C
Operating Humidity	20% ~ 80% RH, non condensing
Certifications	RoHS, ISO

PHYSICAL

Form Factor	Industrial PC
Thermal Design	Fanless Passive Cooling
Dimensions	200mm × 184mm × 52mm
Packing Dimensions	340mm × 235mm × 105mm
Housing Material	Aluminium
Housing Finish	Anodised
Housing Colour	Silver
Net and Gross Weight	2.55kg, 2.97kg

OPERATING SYSTEM

Operating System	Thinvent® Thinux™ Embedded Linux
OS Features	Chromium and Mozilla Firefox browsers. RDP 10 (RemoteFX, H.264/AVC), Putty and SSH for remote display. Browser based remote management. VNC shadowing. Java, Python and glibc based location application support. LibreOffice and PDF viewer. Multimedia player with MPEG4 support. SIP video and voice over IP.

Ordering Information

PRODUCT CODE	
IPC3-i3_12l-[RAM]-[SSD]-12_7-[Wireless]-[OS]-[Accessories]	
RAM	4 = 4GB DDR4 8 = 8GB DDR4 16 = 16GB DDR4 32 = 32GB DDR4 64 = 64GB DDR4
SSD	m128 = 128GB m256 = 256GB m32 = 32GB m512 = 512GB m1024 = 1TB
Wireless	m = Dual Band WiFi X = No WiFi
OS	DOS = DOS W_OS = Without OS 11V = Windows 11 IoT Value 11P = Windows 11 Pro Thinux = Thinux™ Embedded Linux U = Ubuntu Linux
Accessories	0 = None 4S = Quad DB9 Serial

www.thinvent.in

sales@thinvent.in

+91-11-430-77467

+91-99903-44251

R&D and Manufacturing
 #11 Sports Complex
 Salvador Do Mundo
 North Goa - 403101, India

Sales
 UGF-10-A Omaxe Gurgaon Mall
 Sector 49, Sohna Road
 Gurgaon - 122018, India

