



# Thinvent Industrial PC IPC3

## Intel Core i3-1215U processor

6 core, up to 4.4 GHz, 10 MB cache

## Dual LAN

## 4GB DDR4 RAM

## 1TB SSD

## No WiFi

## Ubuntu Linux

## Quad DB9 Serial



SKU: IPC3-I3\_12L-4-M1024-12\_7-X-U-4S

Engineered for the relentless rhythm of industry.

Meet the IPC3, the robust, fanless industrial computer built to thrive where others falter. Born from 100% Indian design, it delivers unwavering reliability for your most critical operations, 24 hours a day, 7 days a week.

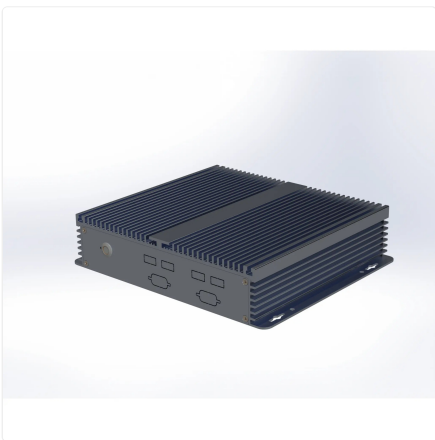
### Built for demanding environments

- Its silent, fanless aluminium chassis shrugs off dust, vibration, and extreme temperatures, ensuring continuous operation without a whisper.
- Enjoy peace of mind with dependable, around-the-clock performance for automation, machine control, and IoT gateways.
- The trusted Ubuntu Linux platform provides a stable and secure foundation for your specialised industrial software.

### Connect and control with confidence

- Directly interface with legacy machinery and modern peripherals using its comprehensive array of industrial ports.
- Dual Gigabit Ethernet ports enable robust network connectivity for data acquisition and system integration.
- Its compact, anodised silver design installs neatly into tight spaces on the factory floor, in utility cabinets, or within transport systems.

The IPC3 isn't just a computer; it's a durable partner for your digital transformation. Deploy it and forget it, knowing your processes are in capable hands.



## Specifications

### PROCESSING

---

|                 |         |
|-----------------|---------|
| Generation      | 12th    |
| Series          | i3      |
| Processor Brand | Intel   |
| Processor Model | 1215U   |
| Cores           | 6       |
| Max Frequency   | 4.4 GHz |
| Cache           | 10 MB   |
| Main Memory     | 4 GB    |
| SSD Storage     | 1024 GB |

### DISPLAY

---

|      |   |
|------|---|
| HDMI | 1 |
| VGA  | 1 |

### AUDIO

---

|             |   |
|-------------|---|
| Speaker Out | 1 |
| Mic In      | 1 |

### CONNECTIVITY

---

|                   |                  |
|-------------------|------------------|
| USB 3.2           | 2                |
| Front USB 2.0     | 4                |
| Front Serial Port | 2 DB9 male RS232 |
| Rear Serial Port  | 4 DB9 male RS232 |
| RS485 Option      | 1                |

### NETWORKING

---

|                |           |
|----------------|-----------|
| Ethernet       | 1000 Mbps |
| Ethernet Ports | 2         |

### POWER

---

|              |  |
|--------------|--|
| DC Voltage   | 12 Volts                                     |
| DC Current   | 7 Amps                                       |
| Power Input  | 100~275 Volts AC, 50~60 Hz, 1.5 Amps maximum |
| Cable Length | 2 Metre                                      |

### ENVIRONMENTAL

---

|                       |                              |
|-----------------------|------------------------------|
| Operating Temperature | 0°C ~ 50°C                   |
| Operating Humidity    | 20% ~ 80% RH, non condensing |
| Certifications        | RoHS, ISO                    |

### PHYSICAL

---

|                      |                         |
|----------------------|-------------------------|
| Form Factor          | Industrial PC           |
| Thermal Design       | Fanless Passive Cooling |
| Dimensions           | 200mm × 184mm × 52mm    |
| Packing Dimensions   | 340mm × 235mm × 105mm   |
| Housing Material     | Aluminium               |
| Housing Finish       | Anodised                |
| Housing Colour       | Silver                  |
| Net and Gross Weight | 2.55kg, 2.97kg          |

### OPERATING SYSTEM

---

|                  |                        |
|------------------|------------------------|
| Operating System | Ubuntu Linux 24.04 LTS |
|------------------|------------------------|

## Ordering Information

| PRODUCT CODE  |  |
|---|--|
| <b>IPC3-i3_12l-[RAM]-[SSD]-12_7-[Wireless]-[OS]-[Accessories]</b> |  |
| RAM   | <b>4</b> = 4GB DDR4 <b>8</b> = 8GB DDR4 <b>16</b> = 16GB DDR4 <b>32</b> = 32GB DDR4<br><b>64</b> = 64GB DDR4   |
| SSD   | <b>m128</b> = 128GB <b>m256</b> = 256GB<br><b>m32</b> = 32GB <b>m512</b> = 512GB<br><b>m1024</b> = 1TB   |
| Wireless  | <b>m</b> = Dual Band WiFi <b>X</b> = No WiFi   |
| OS  | <b>DOS</b> = DOS <b>W_OS</b> = Without OS<br><b>11V</b> = Windows 11 IoT Value <b>11P</b> = Windows 11 Pro<br><b>Thinux</b> = Thinux™ Embedded Linux <b>U</b> = Ubuntu Linux |
| Accessories   | <b>0</b> = None <b>4S</b> = Quad DB9 Serial  |

[www.thinvent.in](http://www.thinvent.in)

[sales@thinvent.in](mailto:sales@thinvent.in)

+91-11-430-77467

+91-99903-44251

**R&D and Manufacturing**  
 #11 Sports Complex  
 Salvador Do Mundo  
 North Goa - 403101, India

**Sales**  
 UGF-10-A Omaxe Gurgaon Mall  
 Sector 49, Sohna Road  
 Gurgaon - 122018, India

