



Thinvent Industrial PC IPC3

Intel Core i3-1215U processor

6 core, up to 4.4 GHz, 10 MB cache

Dual LAN

64GB DDR4 RAM

32GB SSD

No WiFi

Thinux Embedded Linux

SKU: IPC3-I3_12L-64-M32-12_7-X-THINUX-0



Engineered for the edge, built for endurance: the Thinvent IPC3.

Unwavering reliability where it matters most

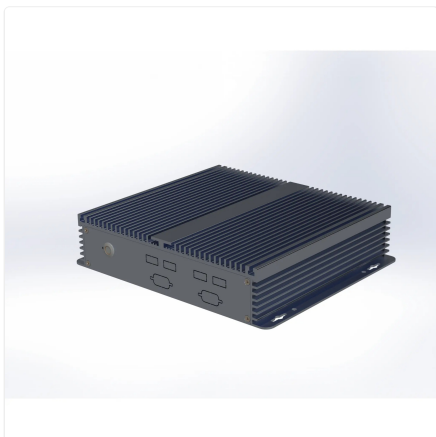
Forged for the toughest industrial and IoT applications, this rugged PC thrives where others fail. Its fanless, solid-state design eliminates moving parts, ensuring silent, maintenance-free 24/7 operation in demanding environments from factory floors to remote outdoor installations. The robust aluminium chassis with an anodised finish shrugs off dust, vibration, and temperature extremes.

Simplify complex operations with intelligent connectivity

- Seamlessly integrate with a vast array of legacy and modern industrial equipment using versatile serial and dual Ethernet ports.

- Deploy and manage your systems effortlessly with the integrated Thinux™ platform, featuring powerful remote management and display tools.
- Run essential productivity and location-based applications directly on the device for a streamlined, self-contained solution.

Proudly conceived and designed in India, the IPC3 delivers robust, dependable computing power to drive your core operations without compromise. It's the steadfast digital heart for your most critical projects.



Specifications

PROCESSING

| | |
|-----------------|---------|
| Generation | 12th |
| Series | i3 |
| Processor Brand | Intel |
| Processor Model | 1215U |
| Cores | 6 |
| Max Frequency | 4.4 GHz |
| Cache | 10 MB |
| Main Memory | 64 GB |
| SSD Storage | 32 GB |

DISPLAY

| | |
|------|---|
| HDMI | 1 |
| VGA | 1 |

AUDIO

| | |
|-------------|---|
| Speaker Out | 1 |
| Mic In | 1 |

CONNECTIVITY

| | |
|-------------------|------------------|
| USB 3.2 | 2 |
| Front USB 2.0 | 4 |
| Front Serial Port | 2 DB9 male RS232 |
| RS485 Option | 1 |

NETWORKING

| | |
|----------------|-----------|
| Ethernet | 1000 Mbps |
| Ethernet Ports | 2 |

POWER

| | |
|--------------|--|
| DC Voltage | 12 Volts |
| DC Current | 7 Amps |
| Power Input | 100~275 Volts AC, 50~60 Hz, 1.5 Amps maximum |
| Cable Length | 2 Metre |

ENVIRONMENTAL

| | |
|-----------------------|------------------------------|
| Operating Temperature | 0°C ~ 50°C |
| Operating Humidity | 20% ~ 80% RH, non condensing |
| Certifications | RoHS, ISO |

PHYSICAL

| | |
|----------------------|-------------------------|
| Form Factor | Industrial PC |
| Thermal Design | Fanless Passive Cooling |
| Dimensions | 200mm × 184mm × 52mm |
| Packing Dimensions | 340mm × 235mm × 105mm |
| Housing Material | Aluminium |
| Housing Finish | Anodised |
| Housing Colour | Silver |
| Net and Gross Weight | 2.55kg, 2.97kg |

OPERATING SYSTEM

| | |
|------------------|--|
| Operating System | Thinvent® Thinux™ Embedded Linux |
| OS Features | Chromium and Mozilla Firefox browsers. RDP 10 (RemoteFX, H.264/AVC), Putty and SSH for remote display. Browser based remote management. VNC shadowing. Java, Python and glibc based location application support. LibreOffice and PDF viewer. Multimedia player with MPEG4 support. SIP video and voice over IP. |

Ordering Information

| PRODUCT CODE | |
|---|--|
| IPC3-i3_12l-[RAM]-[SSD]-12_7-[Wireless]-[OS]-[Accessories] | |
| RAM | 4 = 4GB DDR4 8 = 8GB DDR4 16 = 16GB DDR4 32 = 32GB DDR4 64 = 64GB DDR4 |
| SSD | m128 = 128GB m256 = 256GB m32 = 32GB m512 = 512GB m1024 = 1TB |
| Wireless | m = Dual Band WiFi X = No WiFi |
| OS | DOS = DOS W_OS = Without OS 11V = Windows 11 IoT Value 11P = Windows 11 Pro Thinux = Thinux™ Embedded Linux U = Ubuntu Linux |
| Accessories | 0 = None 4S = Quad DB9 Serial |

www.thinvent.in

sales@thinvent.in

+91-11-430-77467

+91-99903-44251

R&D and Manufacturing
 #11 Sports Complex
 Salvador Do Mundo
 North Goa - 403101, India

Sales
 UGF-10-A Omaxe Gurgaon Mall
 Sector 49, Sohna Road
 Gurgaon - 122018, India

