



# Thinvent Industrial PC IPC3

## Intel Core i3-1215U processor

6 core, up to 4.4 GHz, 10 MB cache

## Dual LAN

## 8GB DDR4 RAM

## 1TB SSD

## No WiFi

## Windows 11 Pro

## Quad DB9 Serial

SKU: IPC3-I3\_12L-8-M1024-12\_5-X-11P-4S



Engineered for the relentless demands of industry.

### The Unshakeable Core of Your Operation

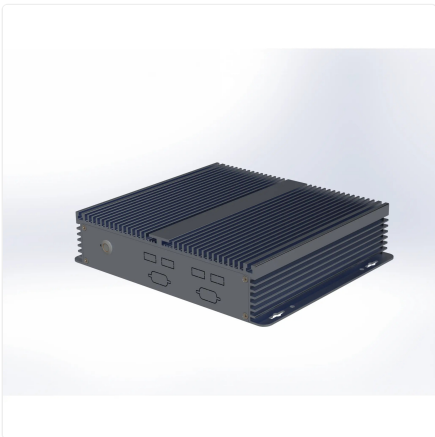
Designed for 24/7 reliability in the toughest settings, this fanless industrial PC thrives where others fail. Its rugged, sealed aluminium chassis passively withstands dust, vibration, and extreme temperatures, ensuring your critical processes never miss a beat.

### Built for Purpose, Designed for India

- Provides steadfast, silent operation with zero moving parts for maintenance-free longevity.

- Delivers dependable computing power for machine control, process automation, and IoT edge deployments.
- Connects seamlessly to a legacy of equipment with multiple serial ports while supporting modern interfaces.
- Offers a robust platform certified for industrial use, 100% designed to meet the specific challenges of the Indian market.

Deploy confidence. Choose the IPC3 for a foundation of durable, always-on performance.



## Specifications

### PROCESSING

---

|                 |         |
|-----------------|---------|
| Generation      | 12th    |
| Series          | i3      |
| Processor Brand | Intel   |
| Processor Model | 1215U   |
| Cores           | 6       |
| Max Frequency   | 4.4 GHz |
| Cache           | 10 MB   |
| Main Memory     | 8 GB    |
| SSD Storage     | 1024 GB |

### DISPLAY

---

|      |   |
|------|---|
| HDMI | 1 |
| VGA  | 1 |

### AUDIO

---

|             |   |
|-------------|---|
| Speaker Out | 1 |
| Mic In      | 1 |

### CONNECTIVITY

---

|                   |                  |
|-------------------|------------------|
| USB 3.2           | 2                |
| Front USB 2.0     | 4                |
| Front Serial Port | 2 DB9 male RS232 |
| Rear Serial Port  | 4 DB9 male RS232 |
| RS485 Option      | 1                |

### NETWORKING

---

|                |           |
|----------------|-----------|
| Ethernet       | 1000 Mbps |
| Ethernet Ports | 2         |

### POWER

---

|              |  |
|--------------|--|
| DC Voltage   | 12 Volts                                     |
| DC Current   | 5 Amps                                       |
| Power Input  | 100~240 Volts AC, 50~60 Hz, 1.5 Amps maximum |
| Cable Length | 2 Metre                                      |

### ENVIRONMENTAL

---

|                       |                              |
|-----------------------|------------------------------|
| Operating Temperature | 0°C ~ 50°C                   |
| Operating Humidity    | 20% ~ 80% RH, non condensing |
| Certifications        | RoHS, ISO                    |

### PHYSICAL

---

|                      |                         |
|----------------------|-------------------------|
| Form Factor          | Industrial PC           |
| Thermal Design       | Fanless Passive Cooling |
| Dimensions           | 200mm × 184mm × 52mm    |
| Packing Dimensions   | 340mm × 235mm × 105mm   |
| Housing Material     | Aluminium               |
| Housing Finish       | Anodised                |
| Housing Colour       | Silver                  |
| Net and Gross Weight | 2.45kg, 2.87kg          |

### OPERATING SYSTEM

---

|                  |                          |
|------------------|--------------------------|
| Operating System | Microsoft Windows 11 Pro |
|------------------|--------------------------|

## Ordering Information

| PRODUCT CODE  |  |
|---|--|
| <b>IPC3-i3_12l-[RAM]-[SSD]-12_7-[Wireless]-[OS]-[Accessories]</b> |  |
| RAM   | <b>4</b> = 4GB DDR4 <b>8</b> = 8GB DDR4 <b>16</b> = 16GB DDR4 <b>32</b> = 32GB DDR4<br><b>64</b> = 64GB DDR4   |
| SSD   | <b>m128</b> = 128GB <b>m256</b> = 256GB<br><b>m32</b> = 32GB <b>m512</b> = 512GB<br><b>m1024</b> = 1TB   |
| Wireless  | <b>m</b> = Dual Band WiFi <b>X</b> = No WiFi   |
| OS  | <b>DOS</b> = DOS <b>W_OS</b> = Without OS<br><b>11V</b> = Windows 11 IoT Value <b>11P</b> = Windows 11 Pro<br><b>Thinux</b> = Thinux™ Embedded Linux <b>U</b> = Ubuntu Linux |
| Accessories   | <b>0</b> = None <b>4S</b> = Quad DB9 Serial  |

[www.thinvent.in](http://www.thinvent.in)

[sales@thinvent.in](mailto:sales@thinvent.in)

+91-11-430-77467

 +91-99903-44251

### R&D and Manufacturing

#11 Sports Complex

Salvador Do Mundo

North Goa - 403101, India

### Sales

UGF-10-A Omaxe Gurgaon Mall

Sector 49, Sohna Road

Gurgaon - 122018, India

