

## Intel Core i3-1215U processor

6 core, up to 4.4 GHz, 10 MB cache

Dual LAN

8GB DDR4 RAM

1TB SSD

No WiFi

Without OS

Quad DB9 Serial



SKU: IPC3-I3\_12L-8-M1024-12\_5-X-W\_OS-4S

Engineered for the extremes: where reliability is non-negotiable.

### Built for the real world

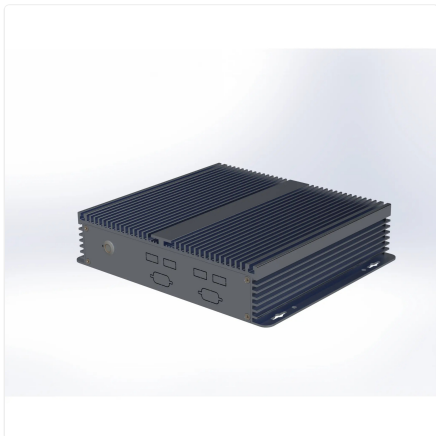
Meet the IPC3, a fanless industrial computer born to thrive where others falter. Its rugged, all-aluminium chassis and anodised silver finish shrug off dust, vibration, and extreme temperatures, delivering unwavering 24/7 performance in the most demanding settings. This is silent, steadfast computing designed from the ground up for industrial resilience.

### Your steadfast partner in automation and control

This isn't just a computer; it's the dependable core of your operation. With its fanless design eliminating moving parts, it ensures years of maintenance-free service, critical for continuous production lines and remote IoT installations. The robust connectivity, including multiple serial ports, makes it the perfect command centre for legacy machinery and modern systems alike.

### Why choose the IPC3

- Conquer harsh environments with a rugged, fanless build that operates silently and reliably.
- Deploy with confidence for 24/7 mission-critical applications, from factory floors to smart agriculture.
- Simplify integration with versatile industrial connectivity, ready to communicate with a wide array of equipment.
- Invest in durability and longevity with a robust design that reduces downtime and total cost of ownership.
- Support innovation with a platform proudly 100% designed in India for global industrial challenges.



## Specifications

### PROCESSING

---

|                 |         |
|-----------------|---------|
| Generation      | 12th    |
| Series          | i3      |
| Processor Brand | Intel   |
| Processor Model | 1215U   |
| Cores           | 6       |
| Max Frequency   | 4.4 GHz |
| Cache           | 10 MB   |
| Main Memory     | 8 GB    |
| SSD Storage     | 1024 GB |

### DISPLAY

---

|      |   |
|------|---|
| HDMI | 1 |
| VGA  | 1 |

### AUDIO

---

|             |   |
|-------------|---|
| Speaker Out | 1 |
| Mic In      | 1 |

### CONNECTIVITY

---

|                   |                  |
|-------------------|------------------|
| USB 3.2           | 2                |
| Front USB 2.0     | 4                |
| Front Serial Port | 2 DB9 male RS232 |
| Rear Serial Port  | 4 DB9 male RS232 |
| RS485 Option      | 1                |

### NETWORKING

---

|                |           |
|----------------|-----------|
| Ethernet       | 1000 Mbps |
| Ethernet Ports | 2         |

### POWER

---

|              |  |
|--------------|--|
| DC Voltage   | 12 Volts                                     |
| DC Current   | 5 Amps                                       |
| Power Input  | 100~240 Volts AC, 50~60 Hz, 1.5 Amps maximum |
| Cable Length | 2 Metre                                      |

### ENVIRONMENTAL

---

|                       |                              |
|-----------------------|------------------------------|
| Operating Temperature | 0°C ~ 50°C                   |
| Operating Humidity    | 20% ~ 80% RH, non condensing |
| Certifications        | RoHS, ISO                    |

### PHYSICAL

---

|                      |                         |
|----------------------|-------------------------|
| Form Factor          | Industrial PC           |
| Thermal Design       | Fanless Passive Cooling |
| Dimensions           | 200mm × 184mm × 52mm    |
| Packing Dimensions   | 340mm × 235mm × 105mm   |
| Housing Material     | Aluminium               |
| Housing Finish       | Anodised                |
| Housing Colour       | Silver                  |
| Net and Gross Weight | 2.45kg, 2.87kg          |

### OPERATING SYSTEM

---

|                  |            |
|------------------|------------|
| Operating System | Without OS |
|------------------|------------|

## Ordering Information

| PRODUCT CODE  |  |
|---|--|
| <b>IPC3-i3_12l-[RAM]-[SSD]-12_7-[Wireless]-[OS]-[Accessories]</b> |  |
| RAM   | <b>4</b> = 4GB DDR4 <b>8</b> = 8GB DDR4 <b>16</b> = 16GB DDR4 <b>32</b> = 32GB DDR4<br><b>64</b> = 64GB DDR4   |
| SSD   | <b>m128</b> = 128GB <b>m256</b> = 256GB<br><b>m32</b> = 32GB <b>m512</b> = 512GB<br><b>m1024</b> = 1TB   |
| Wireless  | <b>m</b> = Dual Band WiFi <b>X</b> = No WiFi   |
| OS  | <b>DOS</b> = DOS <b>W_OS</b> = Without OS<br><b>11V</b> = Windows 11 IoT Value <b>11P</b> = Windows 11 Pro<br><b>Thinux</b> = Thinux™ Embedded Linux <b>U</b> = Ubuntu Linux |
| Accessories   | <b>0</b> = None <b>4S</b> = Quad DB9 Serial  |

[www.thinvent.in](http://www.thinvent.in)

[sales@thinvent.in](mailto:sales@thinvent.in)

+91-11-430-77467

 +91-99903-44251

### R&D and Manufacturing

#11 Sports Complex

Salvador Do Mundo

North Goa - 403101, India

### Sales

UGF-10-A Omaxe Gurgaon Mall

Sector 49, Sohna Road

Gurgaon - 122018, India

