

Intel Core i3-1215U processor

6 core, up to 4.4 GHz, 10 MB cache

Dual LAN

8GB DDR4 RAM

128GB SSD

No WiFi

Windows 11 IoT Value

SKU: IPC3-I3_12L-8-M128-12_5-X-11V-0



Reliable power for the demanding factory floor.

Engineered for endurance in the harshest conditions

This rugged industrial computer thrives where others fail. Built for 24/7 operation in environments filled with dust, vibration, and extreme temperatures, its fanless design ensures silent, maintenance-free reliability with no moving parts to break down.

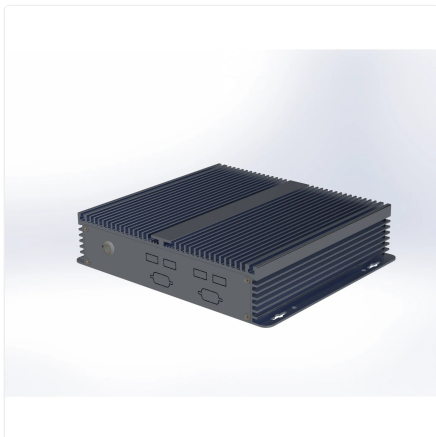
Your robust hub for industrial automation and IoT

- Seamlessly integrates with machinery and legacy systems for real-time process control.

- Acts as a dependable edge computing node, collecting and processing data right where it's generated.
- Provides steadfast performance for digital signage, kiosks, and monitoring stations in demanding locations.

Built to last, designed with pride

Crafted from durable aluminium with a premium anodised finish, this IPC is 100% designed in India to meet the toughest industrial challenges. It delivers the consistent, unwavering performance you need to keep your critical operations running smoothly, day in and day out.



Specifications

PROCESSING

| | |
|-----------------|---------|
| Generation | 12th |
| Series | i3 |
| Processor Brand | Intel |
| Processor Model | 1215U |
| Cores | 6 |
| Max Frequency | 4.4 GHz |
| Cache | 10 MB |
| Main Memory | 8 GB |
| SSD Storage | 128 GB |

DISPLAY

| | |
|------|---|
| HDMI | 1 |
| VGA | 1 |

AUDIO

| | |
|-------------|---|
| Speaker Out | 1 |
| Mic In | 1 |

CONNECTIVITY

| | |
|-------------------|------------------|
| USB 3.2 | 2 |
| Front USB 2.0 | 4 |
| Front Serial Port | 2 DB9 male RS232 |
| RS485 Option | 1 |

NETWORKING

| | |
|----------------|-----------|
| Ethernet | 1000 Mbps |
| Ethernet Ports | 2 |

POWER

| | |
|--------------|--|
| DC Voltage | 12 Volts |
| DC Current | 5 Amps |
| Power Input | 100~240 Volts AC, 50~60 Hz, 1.5 Amps maximum |
| Cable Length | 2 Metre |

ENVIRONMENTAL

| | |
|-----------------------|------------------------------|
| Operating Temperature | 0°C ~ 50°C |
| Operating Humidity | 20% ~ 80% RH, non condensing |
| Certifications | RoHS, ISO |

PHYSICAL

| | |
|----------------------|-------------------------|
| Form Factor | Industrial PC |
| Thermal Design | Fanless Passive Cooling |
| Dimensions | 200mm × 184mm × 52mm |
| Packing Dimensions | 340mm × 235mm × 105mm |
| Housing Material | Aluminium |
| Housing Finish | Anodised |
| Housing Colour | Silver |
| Net and Gross Weight | 2.45kg, 2.87kg |

OPERATING SYSTEM

| | |
|------------------|---|
| Operating System | Microsoft Windows 11 IoT Enterprise LTSC 2024 Value |
|------------------|---|

Ordering Information

| PRODUCT CODE | |
|---|--|
| IPC3-i3_12l-[RAM]-[SSD]-12_7-[Wireless]-[OS]-[Accessories] | |
| RAM | 4 = 4GB DDR4 8 = 8GB DDR4 16 = 16GB DDR4 32 = 32GB DDR4 64 = 64GB DDR4 |
| SSD | m128 = 128GB m256 = 256GB m32 = 32GB m512 = 512GB m1024 = 1TB |
| Wireless | m = Dual Band WiFi X = No WiFi |
| OS | DOS = DOS W_OS = Without OS 11V = Windows 11 IoT Value 11P = Windows 11 Pro Thinux = Thinux™ Embedded Linux U = Ubuntu Linux |
| Accessories | 0 = None 4S = Quad DB9 Serial |

www.thinvent.in

sales@thinvent.in

+91-11-430-77467

+91-99903-44251

R&D and Manufacturing
 #11 Sports Complex
 Salvador Do Mundo
 North Goa - 403101, India

Sales
 UGF-10-A Omaxe Gurgaon Mall
 Sector 49, Sohna Road
 Gurgaon - 122018, India

