

## Intel Core i3-1215U processor

6 core, up to 4.4 GHz, 10 MB cache

## Dual LAN

## 8GB DDR4 RAM

## 32GB SSD

## No WiFi

## Windows 11 IoT Value

SKU: IPC3-I3\_12L-8-M32-12\_5-X-11V-0



Reliable power for the demanding factory floor.

### Engineered for endurance in the harshest conditions

This rugged industrial computer thrives where others fail. Built for 24/7 operation in environments filled with dust, vibration, and extreme temperatures, its fanless design ensures silent, maintenance-free reliability with no moving parts to break down.

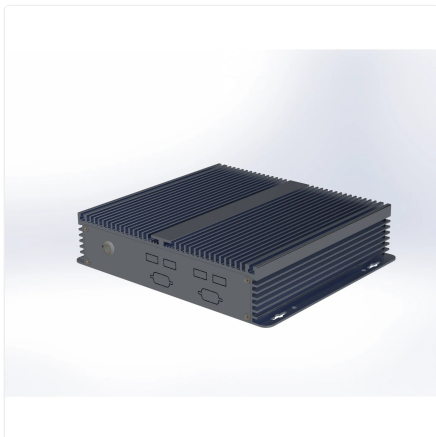
### Your robust hub for industrial automation and IoT

- Seamlessly integrates with machinery and legacy systems for real-time process control.

- Acts as a dependable edge computing node, collecting and processing data right where it's generated.
- Provides steadfast performance for digital signage, kiosks, and monitoring stations in demanding locations.

### Built to last, designed with pride

Crafted from durable aluminium with a premium anodised finish, this IPC is 100% designed in India to meet the toughest industrial challenges. It delivers the consistent, unwavering performance you need to keep your critical operations running smoothly, day in and day out.



## Specifications

### PROCESSING

---

Generation	12th
Series	i3
Processor Brand	Intel
Processor Model	1215U
Cores	6
Max Frequency	4.4 GHz
Cache	10 MB
Main Memory	8 GB
SSD Storage	32 GB

### DISPLAY

---

HDMI	1
VGA	1

### AUDIO

---

Speaker Out	1
Mic In	1

### CONNECTIVITY

---

USB 3.2	2
Front USB 2.0	4
Front Serial Port	2 DB9 male RS232
RS485 Option	1

### NETWORKING

---

Ethernet	1000 Mbps
Ethernet Ports	2

### POWER

---

DC Voltage	12 Volts
DC Current	5 Amps
Power Input	100~240 Volts AC, 50~60 Hz, 1.5 Amps maximum
Cable Length	2 Metre

### ENVIRONMENTAL

---

Operating Temperature	0°C ~ 50°C
Operating Humidity	20% ~ 80% RH, non condensing
Certifications	RoHS, ISO

### PHYSICAL

---

Form Factor	Industrial PC
Thermal Design	Fanless Passive Cooling
Dimensions	200mm × 184mm × 52mm
Packing Dimensions	340mm × 235mm × 105mm
Housing Material	Aluminium
Housing Finish	Anodised
Housing Colour	Silver
Net and Gross Weight	2.45kg, 2.87kg

### OPERATING SYSTEM

---

Operating System	Microsoft Windows 11 IoT Enterprise LTSC 2024 Value
------------------	---

## Ordering Information

PRODUCT CODE	
<b>IPC3-i3_12l-[RAM]-[SSD]-12_7-[Wireless]-[OS]-[Accessories]</b>	
RAM	<b>4</b> = 4GB DDR4 <b>8</b> = 8GB DDR4 <b>16</b> = 16GB DDR4 <b>32</b> = 32GB DDR4 <b>64</b> = 64GB DDR4
SSD	<b>m128</b> = 128GB <b>m256</b> = 256GB <b>m32</b> = 32GB <b>m512</b> = 512GB <b>m1024</b> = 1TB
Wireless	<b>m</b> = Dual Band WiFi <b>X</b> = No WiFi
OS	<b>DOS</b> = DOS <b>W_OS</b> = Without OS <b>11V</b> = Windows 11 IoT Value <b>11P</b> = Windows 11 Pro <b>Thinux</b> = Thinux™ Embedded Linux <b>U</b> = Ubuntu Linux
Accessories	<b>0</b> = None <b>4S</b> = Quad DB9 Serial

[www.thinvent.in](http://www.thinvent.in)

[sales@thinvent.in](mailto:sales@thinvent.in)

+91-11-430-77467

 +91-99903-44251

**R&D and Manufacturing**  
 #11 Sports Complex  
 Salvador Do Mundo  
 North Goa - 403101, India

**Sales**  
 UGF-10-A Omaxe Gurgaon Mall  
 Sector 49, Sohna Road  
 Gurgaon - 122018, India

