



Thinvent Industrial PC IPC3

Intel Core i3-1315U processor

6 core, up to 4.5 GHz, 10 MB cache

8GB DDR4 RAM

1TB SSD

No WiFi

Ubuntu Linux

SKU: IPC3-I3_13-8-M1024-12_5-X-U-0



Conquer Every Challenge: The Thinvent® IPC3 Industrial Powerhouse.

Engineered in India for unparalleled resilience, the Thinvent® Industrial PC IPC3 is your steadfast partner for demanding industrial and IoT applications. This rugged, fanless marvel is built to thrive where others fail, ensuring 24x7 operation even in the harshest environments.

Unmatched Performance & Reliability

Powered by an Intel® Core™ i3-1315U processor with 6 cores boosting up to 4.5 GHz and 10 MB cache, coupled with 16GB DDR4 RAM and a rapid 256GB SSD, the IPC3 delivers exceptional processing power and speed for critical tasks. Its fanless design eliminates moving parts, reducing maintenance and preventing dust ingress for superior longevity. Running on the stable and secure Ubuntu Linux 24.04 LTS, it is ready for immediate deployment.

Designed for the Toughest Environments

Encased in a sleek, silver anodised aluminium housing measuring 200mm x 184mm x 52mm, the IPC3 is not just durable but also visually striking.

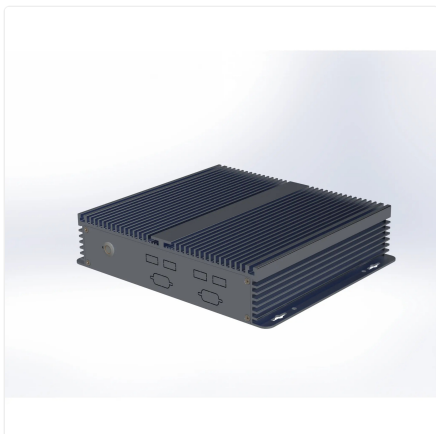
- Operate flawlessly from 0°C to 50°C.
- Withstands 20% to 80% RH non-condensing humidity.
- RoHS and ISO certified for quality and compliance.

Seamless Connectivity & Integration

Connect your essential peripherals and network with ease

- Video Outputs: 1 HDMI, 1 VGA
- Audio: 1 Speaker Out, 1 Mic In
- USB Ports: 2 USB 3.2, 2 USB 2.0 (rear), 4 USB 2.0 (front)
- Network: Gigabit Ethernet (1000 Mbps)
- Power: Stable 12V 7A DC input, adaptable 100~275V AC
- (2m cable)

The Thinvent® IPC3 stands as a testament to robust engineering, 100% designed in India for the global industrial landscape.



Specifications

PROCESSING

| | |
|-----------------|---------|
| Generation | 13th |
| Series | i3 |
| Processor Brand | Intel |
| Processor Model | 1315U |
| Cores | 6 |
| Max Frequency | 4.5 GHz |
| Cache | 10 MB |
| Main Memory | 8 GB |
| SSD Storage | 1024 GB |

DISPLAY

| | |
|------|---|
| HDMI | 1 |
| VGA | 1 |

AUDIO

| | |
|-------------|---|
| Speaker Out | 1 |
| Mic In | 1 |

CONNECTIVITY

| | |
|-------------------|------------------|
| USB 3.2 | 2 |
| USB 2.0 | 2 |
| Front USB 2.0 | 4 |
| Front Serial Port | 2 DB9 male RS232 |

NETWORKING

| | |
|----------|-----------|
| Ethernet | 1000 Mbps |
|----------|-----------|

POWER

| | |
|--------------|--|
| DC Voltage | 12 Volts |
| DC Current | 5 Amps |
| Power Input | 100~240 Volts AC, 50~60 Hz, 1.5 Amps maximum |
| Cable Length | 2 Metre |

ENVIRONMENTAL

| | |
|-----------------------|------------------------------|
| Operating Temperature | 0°C ~ 50°C |
| Operating Humidity | 20% ~ 80% RH, non condensing |
| Certifications | RoHS, ISO |

PHYSICAL

| | |
|----------------------|-------------------------|
| Form Factor | Industrial PC |
| Thermal Design | Fanless Passive Cooling |
| Dimensions | 200mm × 184mm × 52mm |
| Packing Dimensions | 340mm × 235mm × 105mm |
| Housing Material | Aluminium |
| Housing Finish | Anodised |
| Housing Colour | Silver |
| Net and Gross Weight | 2.38kg, 2.80kg |

OPERATING SYSTEM

| | |
|------------------|------------------------|
| Operating System | Ubuntu Linux 24.04 LTS |
|------------------|------------------------|

Ordering Information

| PRODUCT CODE | |
|--|--|
| IPC3-i3_13-[RAM]-[SSD]-12_7-[Wireless]-[OS]-[Accessories] | |
| RAM | 4 = 4GB DDR4 8 = 8GB DDR4 16 = 16GB DDR4 32 = 32GB DDR4 64 = 64GB DDR4 |
| SSD | m128 = 128GB m256 = 256GB m32 = 32GB m512 = 512GB m1024 = 1TB |
| Wireless | m = Dual Band WiFi X = No WiFi |
| OS | DOS = DOS W_OS = Without OS 11V = Windows 11 IoT Value 11P = Windows 11 Pro Thinux = Thinux™ Embedded Linux U = Ubuntu Linux |
| Accessories | 0 = None 4S = Quad DB9 Serial |

www.thinvent.in

sales@thinvent.in

+91-11-430-77467

 +91-99903-44251

R&D and Manufacturing
 #11 Sports Complex
 Salvador Do Mundo
 North Goa - 403101, India

Sales
 UGF-10-A Omaxe Gurgaon Mall
 Sector 49, Sohna Road
 Gurgaon - 122018, India

