



# Thinvent Uno 23.8" All in One PC

## Intel Core Ultra 5 125U processor

12 core, up to 4.3 GHz, 12 MB cache

Dual LAN

16GB DDR5 RAM

128GB SSD

No WiFi

Without OS

Fixed Stand

SKU: UNO24-CU5\_14L-16\_5-M128-12\_7-X-W\_OS-F



Built for the precision-driven workplace: the sleek, all-in-one solution that thrives where others falter.

### Engineered for Unwavering Reliability

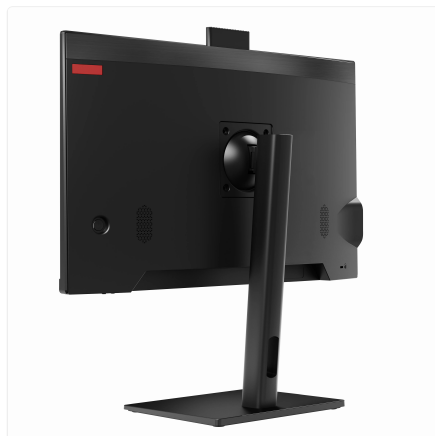
Harnessing the power of Intel's latest Core Ultra architecture, this 23.8-inch AIO delivers smooth, responsive performance for your most demanding business applications. Its fanless design and robust aluminium alloy construction ensure silent, durable operation in challenging environments, from the factory floor to the secure control room.

### Master of Focused Connectivity

Dual Gigabit Ethernet ports provide rock-solid, high-speed network redundancy and segmentation, perfect for point-of-sale systems, digital signage, or industrial control panels. With multiple USB ports and essential video outputs, it seamlessly integrates into any existing setup, offering unparalleled flexibility without unnecessary wireless clutter.

### Streamline Your Operations

The space-saving all-in-one design reduces cable mess and maximises desk space, creating a cleaner, more professional workspace. Its pop-up camera offers privacy when not in use, making it ideal for secure kiosks or confidential workstations. Ready for your custom software image, it's the dependable, no-fuss foundation that lets you focus purely on the task at hand.



# Thinvent Uno 23.8" All in One PC



## Specifications

### PROCESSING

---

|                 |         |
|-----------------|---------|
| Generation      | 14th    |
| Series          | Ultra 5 |
| Processor Brand | Intel   |
| Processor Model | 125U    |
| Cores           | 12      |
| Max Frequency   | 4.3 GHz |
| Cache           | 12 MB   |
| Main Memory     | 16 GB   |
| SSD Storage     | 128 GB  |

### DISPLAY

---

|               |                                |
|---------------|--------------------------------|
| Screen Size   | 23.8 inch                      |
| Resolution    | 1920 × 1080                    |
| Brightness    | 250 nits                       |
| Viewing Angle | Horizontal 178°, Vertical 178° |
| Camera        | Pop up, 2 Megapixel            |
| HDMI 2.0      | 1                              |
| VGA           | 1                              |

### AUDIO

---

|             |             |
|-------------|-------------|
| Speakers    | 2 × 3 Watts |
| Speaker Out | 1           |
| Mic In      | 1           |

### CONNECTIVITY

---

|              |   |
|--------------|---|
| USB 3.2      | 2 |
| USB 2.0      | 2 |
| Side USB 2.0 | 2 |
| RS485 Option | 1 |

### NETWORKING

---

|                |           |
|----------------|-----------|
| Ethernet       | 1000 Mbps |
| Ethernet Ports | 2         |

### POWER

---

|              |  |
|--------------|--|
| DC Voltage   | 12 Volts                                     |
| DC Current   | 7 Amps                                       |
| Power Input  | 100~275 Volts AC, 50~60 Hz, 1.5 Amps maximum |
| Cable Length | 2 Metre                                      |

### ENVIRONMENTAL

---

|                       |                              |
|-----------------------|------------------------------|
| Operating Temperature | 0°C ~ 35°C                   |
| Operating Humidity    | 20% ~ 80% RH, non condensing |
| Certifications        | BIS, RoHS, ISO               |

### PHYSICAL

---

|                      |  |
|----------------------|--|
| Form Factor          | All-in-One                             |
| Stand                | Fixed                                  |
| Dimensions           | 541mm × 400mm × 55mm                   |
| Housing Material     | Aluminium alloy, steel and ABS Plastic |
| Housing Colour       | Black                                  |
| Kensington Lock      | Yes                                    |
| Net and Gross Weight | 8.53kg, 8.53kg                         |

### OPERATING SYSTEM

---

|                  |            |
|------------------|------------|
| Operating System | Without OS |
|------------------|------------|

## Ordering Information

### PRODUCT CODE

**Uno24-cu5\_14l-[RAM]-[SSD]-12\_7-[Wireless]-[OS]-[Accessories]**

|             |   |  |                         |
|-------------|---|--|-------------------------|
| RAM         | <b>8_5</b> = 8GB DDR5   | <b>16_5</b> = 16GB DDR5  | <b>32_5</b> = 32GB DDR5 |
| SSD         | <b>m128</b> = 128GB<br><b>m32</b> = 32GB<br><b>m1024</b> = 1TB                                  | <b>m256</b> = 256GB<br><b>m512</b> = 512GB   |                         |
| Wireless    | <b>m</b> = Dual Band WiFi   | <b>X</b> = No WiFi   |                         |
| OS          | <b>DOS</b> = DOS<br><b>11V</b> = Windows 11 IoT Value<br><b>Thinix</b> = Thinix™ Embedded Linux | <b>W_OS</b> = Without OS<br><b>11P</b> = Windows 11 Pro<br><b>U</b> = Ubuntu Linux |                         |
| Accessories | <b>F</b> = Fixed Stand  | <b>HA</b> = Height Adjustable Stand  |                         |

[www.thinvent.in](http://www.thinvent.in)

[sales@thinvent.in](mailto:sales@thinvent.in)

+91-11-430-77467

 +91-99903-44251

### R&D and Manufacturing

#11 Sports Complex  
Salvador Do Mundo  
North Goa - 403101, India

### Sales

UGF-10-A Omaxe Gurgaon Mall  
Sector 49, Sohna Road  
Gurgaon - 122018, India

