



# Thinvent Uno 23.8" All in One PC

## Intel Core Ultra 5 125U processor

12 core, up to 4.3 GHz, 12 MB cache

## Dual LAN

## 32GB DDR5 RAM

## 1TB SSD

## No WiFi

## Windows 11 Pro

## Height Adjustable Stand

SKU: UNO24-CU5\_14L-32\_5-M1024-12\_5-X-11P-HA



Engineered for the relentless rhythm of modern business.

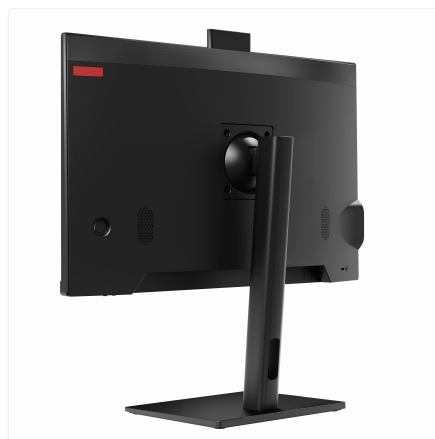
The Uno All-in-One PC is your sleek, centralised command centre. Forget bulky towers and tangled cables; this streamlined powerhouse integrates everything into a single, elegant footprint. With a vibrant 23.8-inch display, it delivers crisp clarity for everything from intricate schematics to live production dashboards.

### Built for the demanding environment

- Effortlessly manage multiple industrial applications with smooth, responsive performance.
- Maintain critical network connections with unwavering reliability through dual Gigabit Ethernet ports.

- Enhance workplace ergonomics and collaboration with the height-adjustable stand and integrated pop-up camera.
- Benefit from the robust security and management features of Windows 11 Pro for business.
- Enjoy a clutter-free workspace that is simple to deploy, secure with a Kensington lock, and built with durable materials for long-term use.

The Thinvent Uno. Where sophisticated design meets industrial-grade dependability.



# Thinvent Uno 23.8" All in One PC



## Specifications

### PROCESSING

---

|                 |         |
|-----------------|---------|
| Generation      | 14th    |
| Series          | Ultra 5 |
| Processor Brand | Intel   |
| Processor Model | 125U    |
| Cores           | 12      |
| Max Frequency   | 4.3 GHz |
| Cache           | 12 MB   |
| Main Memory     | 32 GB   |
| SSD Storage     | 1024 GB |

### DISPLAY

---

|               |                                |
|---------------|--------------------------------|
| Screen Size   | 23.8 inch                      |
| Resolution    | 1920 × 1080                    |
| Brightness    | 250 nits                       |
| Viewing Angle | Horizontal 178°, Vertical 178° |
| Camera        | Pop up, 2 Megapixel            |
| HDMI 2.0      | 1                              |
| VGA           | 1                              |

### AUDIO

---

|             |             |
|-------------|-------------|
| Speakers    | 2 × 3 Watts |
| Speaker Out | 1           |
| Mic In      | 1           |

### CONNECTIVITY

---

|              |   |
|--------------|---|
| USB 3.2      | 2 |
| USB 2.0      | 2 |
| Side USB 2.0 | 2 |
| RS485 Option | 1 |

### NETWORKING

---

|                |           |
|----------------|-----------|
| Ethernet       | 1000 Mbps |
| Ethernet Ports | 2         |

### POWER

---

|              |  |
|--------------|--|
| DC Voltage   | 12 Volts                                     |
| DC Current   | 5 Amps                                       |
| Power Input  | 100~240 Volts AC, 50~60 Hz, 1.5 Amps maximum |
| Cable Length | 2 Metre                                      |

### ENVIRONMENTAL

---

|                       |                              |
|-----------------------|------------------------------|
| Operating Temperature | 0°C ~ 35°C                   |
| Operating Humidity    | 20% ~ 80% RH, non condensing |
| Certifications        | BIS, RoHS, ISO               |

### PHYSICAL

---

|                      |  |
|----------------------|--|
| Form Factor          | All-in-One                             |
| Stand                | Height Adjustable                      |
| Dimensions           | 541mm × 400mm × 55mm                   |
| Housing Material     | Aluminium alloy, steel and ABS Plastic |
| Housing Colour       | Black                                  |
| Kensington Lock      | Yes                                    |
| Net and Gross Weight | 8.43kg, 8.43kg                         |

### OPERATING SYSTEM

---

|                  |                          |
|------------------|--------------------------|
| Operating System | Microsoft Windows 11 Pro |
|------------------|--------------------------|

## Ordering Information

| PRODUCT CODE  |   |                         |  |
|---|---|-------------------------|--|
| <b>Uno24-cu5_14l-[RAM]-[SSD]-12_7-[Wireless]-[OS]-[Accessories]</b> |   |                         |  |
| RAM   | <b>8_5</b> = 8GB DDR5   | <b>16_5</b> = 16GB DDR5 | <b>32_5</b> = 32GB DDR5  |
| SSD   | <b>m128</b> = 128GB<br><b>m32</b> = 32GB<br><b>m1024</b> = 1TB                                  |                         | <b>m256</b> = 256GB<br><b>m512</b> = 512GB   |
| Wireless  | <b>m</b> = Dual Band WiFi   |                         | <b>X</b> = No WiFi   |
| OS  | <b>DOS</b> = DOS<br><b>11V</b> = Windows 11 IoT Value<br><b>Thinix</b> = Thinix™ Embedded Linux |                         | <b>W_OS</b> = Without OS<br><b>11P</b> = Windows 11 Pro<br><b>U</b> = Ubuntu Linux |
| Accessories   | <b>F</b> = Fixed Stand  |                         | <b>HA</b> = Height Adjustable Stand  |

[www.thinvent.in](http://www.thinvent.in)

[sales@thinvent.in](mailto:sales@thinvent.in)

+91-11-430-77467

 +91-99903-44251

### R&D and Manufacturing

#11 Sports Complex  
Salvador Do Mundo  
North Goa - 403101, India

### Sales

UGF-10-A Omaxe Gurgaon Mall  
Sector 49, Sohna Road  
Gurgaon - 122018, India

