



# Thinvent Uno 23.8" All in One PC

## Intel Core i3-1215U processor

6 core, up to 4.4 GHz, 10 MB cache

## Dual LAN

## 16GB DDR4 RAM

## 1TB SSD

## Dual Band WiFi

## Thinix Embedded Linux

## Fixed Stand

SKU: UNO24-I3\_12L-16-M1024-12\_10-M-THINUX-F



Your complete, space-saving solution for digital signage and kiosk applications.

### Streamlined for business, ready for action

This all-in-one PC is engineered for reliability in demanding commercial environments. Its robust aluminium alloy chassis and fixed stand ensure stability in high-traffic areas, while the integrated 23.8" display provides crisp, clear visuals for customer engagement and information display.

### Key benefits

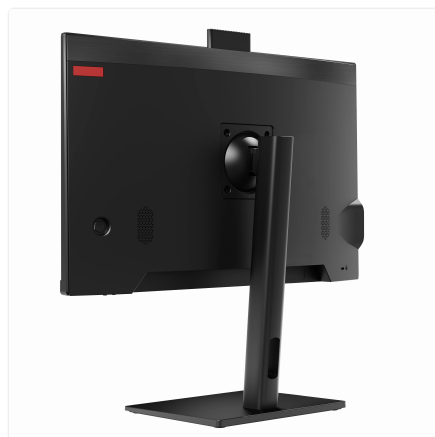
- Unmatched simplicity: With our Thinix™ Embedded Linux OS, enjoy a secure, stable platform that boots instantly and requires minimal IT overhead.
- Always connected: Dual Gigabit LAN ports provide network redundancy for mission-critical operations, keeping your digital signage or point-of-sale system online.

- Remote management made easy: Remotely configure, update, and troubleshoot from any web browser, dramatically reducing site visits and maintenance costs.
- Commercial-grade durability: Built from robust materials and designed for 24/7 operation in shops, restaurants, and industrial settings.

### Ideal for

- Digital menu boards and retail signage
- Interactive kiosks and wayfinding systems
- Thin client and desktop virtualisation terminals
- Industrial control and monitoring stations

Experience the Thinvent difference: a purpose-built machine that just works, day in and day out.



# Thinvent Uno 23.8" All in One PC



## Specifications

### PROCESSING

---

Generation	12th
Series	i3
Processor Brand	Intel
Processor Model	1215U
Cores	6
Max Frequency	4.4 GHz
Cache	10 MB
Main Memory	16 GB
SSD Storage	1024 GB

### DISPLAY

---

Screen Size	23.8 inch
Resolution	1920 × 1080
Brightness	250 nits
Viewing Angle	Horizontal 178°, Vertical 178°
Camera	Pop up, 2 Megapixel
HDMI	1
VGA	1

### AUDIO

---

Speakers	2 × 3 Watts
Speaker Out	1
Mic In	1

### CONNECTIVITY

---

USB 3.2	2
Side USB 2.0	2
RS485 Option	1

### NETWORKING

---

Ethernet	1000 Mbps
Ethernet Ports	2
Wireless Networking	Wi-Fi 5 (802.11ac), dual band

### POWER

---

DC Voltage	12 Volts
DC Current	10 Amps
Power Input	100~275 Volts AC, 50~60 Hz, 1.5

### ENVIRONMENTAL

---

Operating Temperature	0°C ~ 35°C
Operating Humidity	20% ~ 80% RH, non condensing
Certifications	BIS, RoHS, ISO

### PHYSICAL

---

Form Factor	All-in-One
Stand	Fixed
Dimensions	541mm × 400mm × 55mm
Housing Material	Aluminium alloy, steel and ABS Plastic
Housing Colour	Black
Kensington Lock	Yes
Net and Gross Weight	8.49kg, 8.49kg

### OPERATING SYSTEM

---

Operating System	Thinvent® Thinux™ Embedded Linux
OS Features	Chromium and Mozilla Firefox browsers. RDP 10 (RemoteFX, H.264/AVC), Putty and SSH for remote display. Browser based remote management. VNC shadowing. Java, Python and glibc based location application support. LibreOffice and PDF viewer. Multimedia player with MPEG4 support. SIP video and voice over IP.

Amps maximum

---

**Cable Length**

2 Metre

## Ordering Information

PRODUCT CODE	
<b>Uno24-i3_12l-[RAM]-[SSD]-12_10-[Wireless]-[OS]-[Accessories]</b>	
RAM	<b>4</b> = 4GB DDR4 <b>8</b> = 8GB DDR4 <b>16</b> = 16GB DDR4 <b>32</b> = 32GB DDR4 <b>64</b> = 64GB DDR4
SSD	<b>m128</b> = 128GB <b>m256</b> = 256GB <b>m32</b> = 32GB <b>m512</b> = 512GB <b>m1024</b> = 1TB
Wireless	<b>m</b> = Dual Band WiFi <b>X</b> = No WiFi
OS	<b>DOS</b> = DOS <b>W_OS</b> = Without OS <b>11V</b> = Windows 11 IoT Value <b>11P</b> = Windows 11 Pro <b>Thinux</b> = Thinux™ Embedded Linux <b>U</b> = Ubuntu Linux
Accessories	<b>F</b> = Fixed Stand <b>HA</b> = Height Adjustable Stand

[www.thinvent.in](http://www.thinvent.in)

[sales@thinvent.in](mailto:sales@thinvent.in)

+91-11-430-77467

 +91-99903-44251

**R&D and Manufacturing**  
 #11 Sports Complex  
 Salvador Do Mundo  
 North Goa - 403101, India

**Sales**  
 UGF-10-A Omaxe Gurgaon Mall  
 Sector 49, Sohna Road  
 Gurgaon - 122018, India

