



# Thinvent Uno 23.8" All in One PC

## Intel Core i3-1215U processor

6 core, up to 4.4 GHz, 10 MB cache

## Dual LAN

## 32GB DDR4 RAM

## 1TB SSD

## No WiFi

## Thinix Embedded Linux

## Fixed Stand

SKU: UNO24-I3\_12L-32-M1024-12\_10-X-THINUX-F



Engineered for the long run in the busiest environments.

Thinvent Uno: Your dedicated digital hub, built for reliability where it matters most. This all-in-one PC combines a vivid 23.8" display with robust, fanless computing power, designed to deliver day-in, day-out performance without fuss.

### Perfect for demanding settings

- Serve as an unshakeable point-of-sale terminal or self-service kiosk.
- Operate as a central control panel for machinery or building management systems.
- Function as a durable digital signage player or information point in public areas.
- Act as a secure, dedicated workstation for specialised industrial software.

### Why choose the Uno

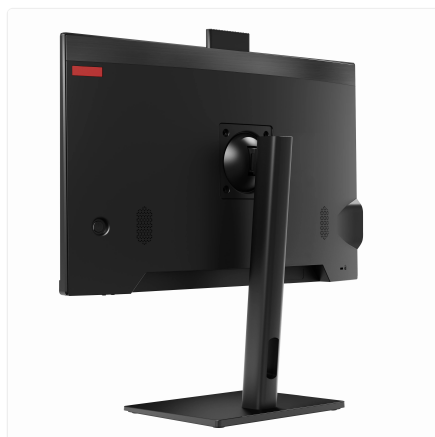
**Uncompromising uptime:** With no moving parts and a rugged aluminium alloy construction, it shrugs off dust, vibration, and continuous operation.

**Streamlined and secure:** The integrated Thinix operating system is built for stability and remote management, reducing IT overhead and vulnerability.

**Simplified connectivity:** Dual Ethernet ports offer network redundancy or segregation, ensuring your critical applications stay online.

**Space-saving design:** The all-in-one form factor eliminates desktop clutter, making installation in tight spaces clean and straightforward.

**Invest in a workhorse designed to perform.** The Thinvent Uno delivers steadfast computing power where you need it most, year after year.



# Thinvent Uno 23.8" All in One PC



## Specifications

### PROCESSING

---

Generation	12th
Series	i3
Processor Brand	Intel
Processor Model	1215U
Cores	6
Max Frequency	4.4 GHz
Cache	10 MB
Main Memory	32 GB
SSD Storage	1024 GB

### DISPLAY

---

Screen Size	23.8 inch
Resolution	1920 × 1080
Brightness	250 nits
Viewing Angle	Horizontal 178°, Vertical 178°
Camera	Pop up, 2 Megapixel
HDMI	1
VGA	1

### AUDIO

---

Speakers	2 × 3 Watts
Speaker Out	1
Mic In	1

### CONNECTIVITY

---

USB 3.2	2
Side USB 2.0	2
RS485 Option	1

### NETWORKING

---

Ethernet	1000 Mbps
Ethernet Ports	2

### POWER

---

DC Voltage	12 Volts
DC Current	10 Amps
Power Input	100~275 Volts AC, 50~60 Hz, 1.5

### ENVIRONMENTAL

---

Operating Temperature	0°C ~ 35°C
Operating Humidity	20% ~ 80% RH, non condensing
Certifications	BIS, RoHS, ISO

### PHYSICAL

---

Form Factor	All-in-One
Stand	Fixed
Dimensions	541mm × 400mm × 55mm
Housing Material	Aluminium alloy, steel and ABS Plastic
Housing Colour	Black
Kensington Lock	Yes
Net and Gross Weight	8.49kg, 8.49kg

### OPERATING SYSTEM

---

Operating System	Thinvent® Thinux™ Embedded Linux
OS Features	Chromium and Mozilla Firefox browsers. RDP 10 (RemoteFX, H.264/AVC), Putty and SSH for remote display. Browser based remote management. VNC shadowing. Java, Python and glibc based location application support. LibreOffice and PDF viewer. Multimedia player with MPEG4 support. SIP video and voice over IP.

Amps maximum

---

**Cable Length**

2 Metre

## Ordering Information

PRODUCT CODE	
<b>Uno24-i3_12l-[RAM]-[SSD]-12_10-[Wireless]-[OS]-[Accessories]</b>	
RAM	<b>4</b> = 4GB DDR4 <b>8</b> = 8GB DDR4 <b>16</b> = 16GB DDR4 <b>32</b> = 32GB DDR4 <b>64</b> = 64GB DDR4
SSD	<b>m128</b> = 128GB <b>m256</b> = 256GB <b>m32</b> = 32GB <b>m512</b> = 512GB <b>m1024</b> = 1TB
Wireless	<b>m</b> = Dual Band WiFi <b>X</b> = No WiFi
OS	<b>DOS</b> = DOS <b>W_OS</b> = Without OS <b>11V</b> = Windows 11 IoT Value <b>11P</b> = Windows 11 Pro <b>Thinux</b> = Thinux™ Embedded Linux <b>U</b> = Ubuntu Linux
Accessories	<b>F</b> = Fixed Stand <b>HA</b> = Height Adjustable Stand

[www.thinvent.in](http://www.thinvent.in)

[sales@thinvent.in](mailto:sales@thinvent.in)

+91-11-430-77467

+91-99903-44251

**R&D and Manufacturing**  
 #11 Sports Complex  
 Salvador Do Mundo  
 North Goa - 403101, India

**Sales**  
 UGF-10-A Omaxe Gurgaon Mall  
 Sector 49, Sohna Road  
 Gurgaon - 122018, India

