



# Thinvent Uno 23.8" All in One PC

## Intel Core i3-1215U processor

6 core, up to 4.4 GHz, 10 MB cache

## Dual LAN

## 8GB DDR4 RAM

## 1TB SSD

## Dual Band WiFi

## Thinix Embedded Linux

## Height Adjustable Stand

SKU: UNO24-I3\_12L-8-M1024-12\_10-M-THINUX-HA



Engineered for endurance, designed for simplicity.

Meet the Thinvent® Uno 23.8" All-in-One PC, your steadfast partner for continuous operation in demanding environments. This isn't just a computer; it's a reliable workhorse built to streamline your daily tasks without fuss or failure.

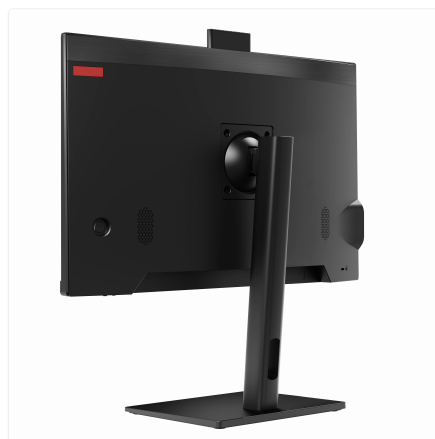
### Perfect for your mission-critical operations

- Effortlessly manage digital signage, kiosks, or control panels with its clean, all-in-one design.
- Host essential applications for point-of-sale, logistics, or factory floor monitoring with consistent, reliable performance.

- Serve as a dedicated terminal for remote access and management, keeping your operations centralised and secure.

Why choose the Uno?

Its robust, space-saving form factor declutters any workspace, from a busy workshop to a public information point. The integrated, height-adjustable stand ensures comfortable viewing all day long, reducing operator strain. With its pre-installed, optimised operating system, it boots swiftly and runs your core business applications securely and reliably, day in and day out. This is plug-and-play productivity, engineered to work where you need it most.



# Thinvent Uno 23.8" All in One PC



## Specifications

### PROCESSING

---

Generation	12th
Series	i3
Processor Brand	Intel
Processor Model	1215U
Cores	6
Max Frequency	4.4 GHz
Cache	10 MB
Main Memory	8 GB
SSD Storage	1024 GB

### DISPLAY

---

Screen Size	23.8 inch
Resolution	1920 × 1080
Brightness	250 nits
Viewing Angle	Horizontal 178°, Vertical 178°
Camera	Pop up, 2 Megapixel
HDMI	1
VGA	1

### AUDIO

---

Speakers	2 × 3 Watts
Speaker Out	1
Mic In	1

### CONNECTIVITY

---

USB 3.2	2
Side USB 2.0	2
RS485 Option	1

### NETWORKING

---

Ethernet	1000 Mbps
Ethernet Ports	2
Wireless Networking	Wi-Fi 5 (802.11ac), dual band

### POWER

---

DC Voltage	12 Volts
DC Current	10 Amps
Power Input	100~275 Volts AC, 50~60 Hz, 1.5

### ENVIRONMENTAL

---

Operating Temperature	0°C ~ 35°C
Operating Humidity	20% ~ 80% RH, non condensing
Certifications	BIS, RoHS, ISO

### PHYSICAL

---

Form Factor	All-in-One
Stand	Height Adjustable
Dimensions	541mm × 400mm × 55mm
Housing Material	Aluminium alloy, steel and ABS Plastic
Housing Colour	Black
Kensington Lock	Yes
Net and Gross Weight	8.49kg, 8.49kg

### OPERATING SYSTEM

---

Operating System	Thinvent® Thinux™ Embedded Linux
OS Features	Chromium and Mozilla Firefox browsers. RDP 10 (RemoteFX, H.264/AVC), Putty and SSH for remote display. Browser based remote management. VNC shadowing. Java, Python and glibc based location application support. LibreOffice and PDF viewer. Multimedia player with MPEG4 support. SIP video and voice over IP.

Amps maximum

---

**Cable Length**

2 Metre

## Ordering Information

PRODUCT CODE	
<b>Uno24-i3_12l-[RAM]-[SSD]-12_10-[Wireless]-[OS]-[Accessories]</b>	
RAM	<b>4</b> = 4GB DDR4 <b>8</b> = 8GB DDR4 <b>16</b> = 16GB DDR4 <b>32</b> = 32GB DDR4 <b>64</b> = 64GB DDR4
SSD	<b>m128</b> = 128GB <b>m256</b> = 256GB <b>m32</b> = 32GB <b>m512</b> = 512GB <b>m1024</b> = 1TB
Wireless	<b>m</b> = Dual Band WiFi <b>X</b> = No WiFi
OS	<b>DOS</b> = DOS <b>W_OS</b> = Without OS <b>11V</b> = Windows 11 IoT Value <b>11P</b> = Windows 11 Pro <b>Thinux</b> = Thinux™ Embedded Linux <b>U</b> = Ubuntu Linux
Accessories	<b>F</b> = Fixed Stand <b>HA</b> = Height Adjustable Stand

[www.thinvent.in](http://www.thinvent.in)

[sales@thinvent.in](mailto:sales@thinvent.in)

+91-11-430-77467

 +91-99903-44251

**R&D and Manufacturing**  
 #11 Sports Complex  
 Salvador Do Mundo  
 North Goa - 403101, India

**Sales**  
 UGF-10-A Omaxe Gurgaon Mall  
 Sector 49, Sohna Road  
 Gurgaon - 122018, India

