



# Thinvent Uno 23.8" All in One PC

## Intel Core i5-1240P processor

12 core, up to 4.4 GHz, 12 MB cache

## Dual LAN

## 32GB DDR4 RAM

## 256GB SSD

## Dual Band WiFi

## Without OS

## Fixed Stand

SKU: UNO24-I5\_12L-32-M256-12\_10-M-W\_OS-F



Engineered for demanding environments, built for simplicity.

Meet the Thinvent Uno All-in-One: the ultimate space-saving industrial workhorse. Designed for 24/7 reliability in challenging settings, it consolidates your entire workstation into a single, robust unit. Say goodbye to bulky towers and messy cable clutter, freeing up valuable floor and desk space for what matters most.

### Ideal use cases

- Digital signage and interactive kiosks in retail or hospitality.
- Factory floor control stations and HMI applications.
- Reception desks and public information points.
- Light industrial computing and process monitoring.

### Why choose the Thinvent Uno

#### Uncompromising reliability

Constructed from premium materials, the Uno is built to endure. Its fanless, solid-state design ensures silent, dust-resistant operation for years of trouble-free service in dusty or volatile environments.

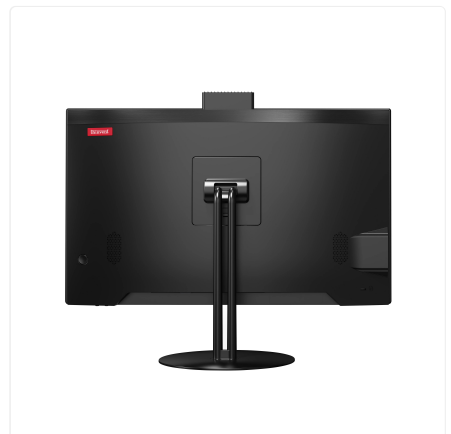
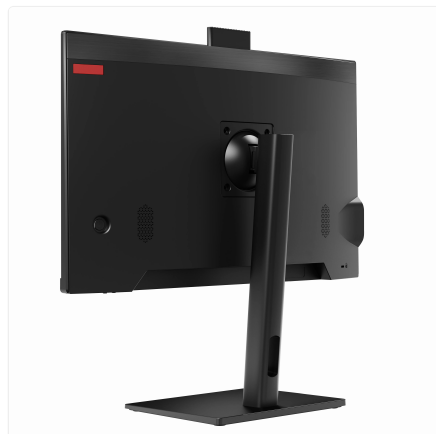
#### Maximum connectivity and control

With dual Ethernet ports, you gain superior network flexibility for critical data transfer or network redundancy. The comprehensive I/O panel offers effortless connection to a world of peripherals and legacy equipment.

#### Total operational efficiency

The sleek, all-in-one design drastically reduces installation time and maintenance headaches. The energy-efficient power profile and durable fixed stand mean lower running costs and a secure, steadfast presence wherever you place it.

Deploy a cleaner, smarter, and more dependable computing solution. Choose the Thinvent Uno All-in-One.



# Thinvent Uno 23.8" All in One PC



## Specifications

### PROCESSING

---

|                 |         |
|-----------------|---------|
| Generation      | 12th    |
| Series          | i5      |
| Processor Brand | Intel   |
| Processor Model | 1240P   |
| Cores           | 12      |
| Max Frequency   | 4.4 GHz |
| Cache           | 12 MB   |
| Main Memory     | 32 GB   |
| SSD Storage     | 256 GB  |

### DISPLAY

---

|               |                                |
|---------------|--------------------------------|
| Screen Size   | 23.8 inch                      |
| Resolution    | 1920 × 1080                    |
| Brightness    | 250 nits                       |
| Viewing Angle | Horizontal 178°, Vertical 178° |
| Camera        | Pop up, 2 Megapixel            |
| HDMI          | 1                              |
| VGA           | 1                              |

### AUDIO

---

|             |             |
|-------------|-------------|
| Speakers    | 2 × 3 Watts |
| Speaker Out | 1           |
| Mic In      | 1           |

### CONNECTIVITY

---

|              |   |
|--------------|---|
| USB 3.2      | 2 |
| Side USB 2.0 | 2 |

### NETWORKING

---

|                     |                               |
|---------------------|-------------------------------|
| Ethernet            | 1000 Mbps                     |
| Ethernet Ports      | 2                             |
| Wireless Networking | Wi-Fi 5 (802.11ac), dual band |

### POWER

---

|              |  |
|--------------|--|
| DC Voltage   | 12 Volts                                     |
| DC Current   | 10 Amps                                      |
| Power Input  | 100~275 Volts AC, 50~60 Hz, 1.5 Amps maximum |
| Cable Length | 2 Metre                                      |

### ENVIRONMENTAL

---

|                       |                              |
|-----------------------|------------------------------|
| Operating Temperature | 0°C ~ 35°C                   |
| Operating Humidity    | 20% ~ 80% RH, non condensing |
| Certifications        | BIS, RoHS, ISO               |

### PHYSICAL

---

|                      |  |
|----------------------|--|
| Form Factor          | All-in-One                             |
| Stand                | Fixed                                  |
| Dimensions           | 541mm × 400mm × 55mm                   |
| Housing Material     | Aluminium alloy, steel and ABS Plastic |
| Housing Colour       | Black                                  |
| Kensington Lock      | Yes                                    |
| Net and Gross Weight | 8.53kg, 8.53kg                         |

### OPERATING SYSTEM

---

|                  |            |
|------------------|------------|
| Operating System | Without OS |
|------------------|------------|

## Ordering Information

| PRODUCT CODE  |  |
|---|--|
| <b>Uno24-i5_12l-[RAM]-[SSD]-12_10-[Wireless]-[OS]-[Accessories]</b> |  |
| RAM   | <b>4</b> = 4GB DDR4 <b>8</b> = 8GB DDR4 <b>16</b> = 16GB DDR4 <b>32</b> = 32GB DDR4<br><b>64</b> = 64GB DDR4   |
| SSD   | <b>m128</b> = 128GB <b>m256</b> = 256GB<br><b>m32</b> = 32GB <b>m512</b> = 512GB<br><b>m1024</b> = 1TB   |
| Wireless  | <b>m</b> = Dual Band WiFi <b>X</b> = No WiFi   |
| OS  | <b>DOS</b> = DOS <b>W_OS</b> = Without OS<br><b>11V</b> = Windows 11 IoT Value <b>11P</b> = Windows 11 Pro<br><b>Thinux</b> = Thinux™ Embedded Linux <b>U</b> = Ubuntu Linux |
| Accessories   | <b>F</b> = Fixed Stand <b>HA</b> = Height Adjustable Stand   |

[www.thinvent.in](http://www.thinvent.in)

[sales@thinvent.in](mailto:sales@thinvent.in)

+91-11-430-77467

 +91-99903-44251

**R&D and Manufacturing**  
 #11 Sports Complex  
 Salvador Do Mundo  
 North Goa - 403101, India

**Sales**  
 UGF-10-A Omaxe Gurgaon Mall  
 Sector 49, Sohna Road  
 Gurgaon - 122018, India

