



# Thinvent Uno 23.8" All in One PC

## Intel Core i5-1240P processor

12 core, up to 4.4 GHz, 12 MB cache

## Dual LAN

## 64GB DDR4 RAM

## 256GB SSD

## Dual Band WiFi

## Thinix Embedded Linux

## Height Adjustable Stand

SKU: UNO24-I5\_12L-64-M256-12\_7-M-THINUX-HA



The All-in-One Built for Business, Not Just the Boardroom.

Simplify your operations with a powerful, integrated computing solution designed for demanding environments. The Thinvent® Uno delivers robust performance in a sleek, space-saving design, ready to tackle your daily tasks with unwavering reliability.

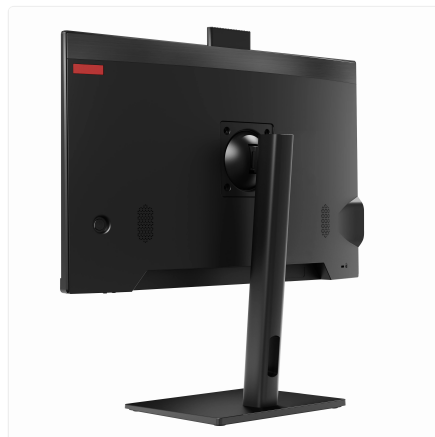
### Engineered for Endurance

- Experience smooth, responsive performance for everything from digital signage and point-of-sale to control room monitoring and interactive kiosks.
- Benefit from a clean, cable-free footprint that saves valuable space and presents a professional, modern appearance.
- Rely on stable, secure operation with a dedicated embedded OS, minimising downtime and maintenance headaches.

### Adapts to Your Workspace

- Effortlessly adjust the vibrant 23.8-inch display to the perfect viewing height for enhanced comfort and productivity throughout the day.
- Connect with ease using versatile ports and dual network connections for maximum flexibility in your setup.
- Deploy with confidence in a variety of settings, from the shop floor to the front office, thanks to its durable construction and efficient design.

The Thinvent Uno is the clear, uncomplicated choice for businesses that need a dependable, all-in-one workhorse. It's the seamless integration of power and practicality you've been looking for.



# Thinvent Uno 23.8" All in One PC



## Specifications

### PROCESSING

---

Generation	12th
Series	i5
Processor Brand	Intel
Processor Model	1240P
Cores	12
Max Frequency	4.4 GHz
Cache	12 MB
Main Memory	64 GB
SSD Storage	256 GB

### DISPLAY

---

Screen Size	23.8 inch
Resolution	1920 × 1080
Brightness	250 nits
Viewing Angle	Horizontal 178°, Vertical 178°
Camera	Pop up, 2 Megapixel
HDMI	1
VGA	1

### AUDIO

---

Speakers	2 × 3 Watts
Speaker Out	1
Mic In	1

### CONNECTIVITY

---

USB 3.2	2
Side USB 2.0	2

### NETWORKING

---

Ethernet	1000 Mbps
Ethernet Ports	2
Wireless Networking	Wi-Fi 5 (802.11ac), dual band

### POWER

---

DC Voltage	12 Volts
DC Current	7 Amps
Power Input	100~275 Volts AC, 50~60 Hz, 1.5

### ENVIRONMENTAL

---

Operating Temperature	0°C ~ 35°C
Operating Humidity	20% ~ 80% RH, non condensing
Certifications	BIS, RoHS, ISO

### PHYSICAL

---

Form Factor	All-in-One
Stand	Height Adjustable
Dimensions	541mm × 400mm × 55mm
Housing Material	Aluminium alloy, steel and ABS Plastic
Housing Colour	Black
Kensington Lock	Yes
Net and Gross Weight	8.53kg, 8.53kg

### OPERATING SYSTEM

---

Operating System	Thinvent® Thinux™ Embedded Linux
OS Features	Chromium and Mozilla Firefox browsers. RDP 10 (RemoteFX, H.264/AVC), Putty and SSH for remote display. Browser based remote management. VNC shadowing. Java, Python and glibc based location application support. LibreOffice and PDF viewer. Multimedia player with MPEG4 support. SIP video and voice over IP.

Amps maximum

---

**Cable Length**

2 Metre

## Ordering Information

PRODUCT CODE	
<b>Uno24-i5_12l-[RAM]-[SSD]-12_10-[Wireless]-[OS]-[Accessories]</b>	
RAM	<b>4</b> = 4GB DDR4 <b>8</b> = 8GB DDR4 <b>16</b> = 16GB DDR4 <b>32</b> = 32GB DDR4 <b>64</b> = 64GB DDR4
SSD	<b>m128</b> = 128GB <b>m256</b> = 256GB <b>m32</b> = 32GB <b>m512</b> = 512GB <b>m1024</b> = 1TB
Wireless	<b>m</b> = Dual Band WiFi <b>X</b> = No WiFi
OS	<b>DOS</b> = DOS <b>W_OS</b> = Without OS <b>11V</b> = Windows 11 IoT Value <b>11P</b> = Windows 11 Pro <b>Thinix</b> = Thinix™ Embedded Linux <b>U</b> = Ubuntu Linux
Accessories	<b>F</b> = Fixed Stand <b>HA</b> = Height Adjustable Stand

[www.thinvent.in](http://www.thinvent.in)

[sales@thinvent.in](mailto:sales@thinvent.in)

+91-11-430-77467

 +91-99903-44251

### R&D and Manufacturing

#11 Sports Complex

Salvador Do Mundo

North Goa - 403101, India

### Sales

UGF-10-A Omaxe Gurgaon Mall

Sector 49, Sohna Road

Gurgaon - 122018, India

